

2020: Puebla, Mexico

CREIGHTON MODEL FertilityCare System

Allied Health Education Programs

Program Director: Thomas W. Hilgers, MD
Location: Puebla, Mexico

Certificate Programs for CREIGHTON MODEL FertilityCare System:

- Practitioners
- Instructors
- Medical Consultants



EDUCATION PHASE I

February 8 – 15, 2020 — Puebla, Mexico

- Practitioners
- Educators
- Medical Consultants

This course will qualify medical consultants to attend the second educational phase in Omaha, NE, USA — March 28 – April 4, 2020

EDUCATION PHASE II

August 17 – 22, 2020 — Mexico

- Practitioners
- Educators

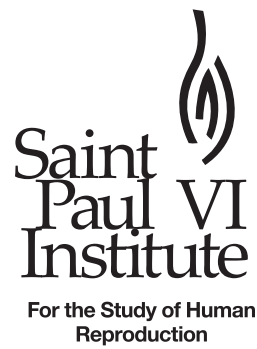
SPONSORED BY...



For the Study of Human
Reproduction



UNIVERSIDAD
PANAMERICANA®



6901 Mercy Rd. | Omaha, NE 68106-2621
www.popepaulvi.com | (402) 390-6600

DEVELOPERS OF THE CREIGHTON MODEL SYSTEM



Ann M. Prebil,
RN, BSN, CFCE,
and her husband, Tom

Susan K. Hilgers,
BA, CFCE

Thomas W. Hilgers,
MD, Dip. ABOG, CFCE

K. Diane Daly,
RN, CFCE,
and her husband, Tom



**THE SAME HAPPY GROUP
IN 1977**

2020 CREIGHTON MODEL FertilityCare System
Practitioner, Instructor, Educator, Medical Consultant,
Physician Assistant, Nurse Practitioner, Nurse Midwife, and
Pharmacist Allied Health Educational Programs

The 2019 **CREIGHTON MODEL FertilityCare System**
Allied Health Education Program offerings are jointly provided by:



UNIVERSIDAD
PANAMERICANA®

and

Creighton University Health Sciences
Continuing Education



Omaha, Nebraska
USA

All Programs are accredited by



TABLE OF CONTENTS

I.	SAINT PAUL VI INSTITUTE CREIGHTON MODEL FertilityCare System ALLIED HEALTH EDUCATION PROGRAMS	6
	A. Home of our Education Programs	6
	B. Educational Objective	6
	C. Developers and Director	6
	D. CREIGHTON MODEL FertilityCare System (CrMS)	7
	E. NaProTECHNOLOGY	7
	F. The Double helix	8
II.	JOIN A PROFESSION TO ESTABLISH PRO-LIFE WOMEN'S REPRODUCTIVE HEALTH CARE BASED ON PRO-LIFE VALUES	8
	A. FertilityCare Practitioner	8
	B. Medical Consultant	8
III.	CREIGHTON MODEL FertilityCare System (CRMS) PROGRAMS	8
	A. FertilityCare Practitioner Program	9
	1. Education Phase I (EPI)	9
	2. Supervised Practicum I (SPI)	10
	3. Education Phase II (EPII)	10
	4. Supervised Practicum II (SPII)	11
	B. FertilityCare Instructor Program	11
	C. FertilityCare Educator Program	11
	D. CrMS Medical Consultant Program	11
	E. Nurse practitioner, physician assistant, NURSE midwife, and pharmacist programs	12
IV.	ELIGIBILITY	12
	A. Applicant Eligibility	12
	B. Auditors	13
	C. International Students	13
V.	CONTINUING EDUCATION CREDITS FOR DOCTORS, NURSES, PHYSICIAN ASSISTANTS, AND NURSE PRACTITIONERS	13
	A. Education Phase I (Omaha only) — October 19–26, 2019	13
	B. Education Phase II (Omaha only) — March 28–April 4, 2020	14
VI.	FEES	15
VII.	FACULTY	17

I. SAINT PAUL VI INSTITUTE CREIGHTON MODEL *FertilityCare* System ALLIED HEALTH EDUCATION PROGRAMS

A. HOME OF OUR EDUCATION PROGRAMS

The Saint Paul VI Institute for the Study of Human Reproduction (the “Institute”), founded in 1985 and located in Omaha, Nebraska, USA, is the leading education, research, and service center in the United States and Internationally in the area of the natural regulation of human fertility and the development of morally and professionally acceptable reproductive health services. Dedicated to Saint Paul VI’s challenge to “physicians and health care professionals” and to “men of science,” the Institute is a living memorial to the challenges placed before us by Saint Paul VI in his encyclical letter *Humanae Vitae* (Of Human Life).¹

B. EDUCATIONAL OBJECTIVE

The educational objective of the Allied Health Educational Programs is to create a new allied health profession through intense and focused educational process of Education Phases and Supervised Practicums. These two phases teach the details of *FertilityCare* management for the practitioner and **NaProTECHNOLOGY** for the Medical Consultant, thus producing highly-educated professionals who can enter their communities and empower women and couples seeking these services.

C. DEVELOPERS AND DIRECTOR

The **CREIGHTON MODEL *FertilityCare* System** (“CrMS”) and the new women’s health science of **NaProTECHNOLOGY** have been developed through a research and education effort coordinated and directed by Thomas W. Hilgers, MD, Director of Saint Paul VI Institute for the Study of Human Reproduction and clinical professor in the Department of Obstetrics and Gynecology, Creighton University Medical Center. The CrMS co-developers, along with Dr. Hilgers, are K. Diane Daly, RN, CFCE; Susan Hilgers, BA, CFCE; and Ann Prebil, RN, BSN, CFCE.

As a medical student at the University of Minnesota, Dr. Hilgers, thinking the church would change its position on the birth control pill, decided to read the newly released Papal Encyclical, *Humanae Vitae*, written by Saint Paul VI. This teaching made a profound impact on him personally and professionally. He was moved to answer the Holy Father’s appeal to men of science, doctors, and medical personnel. Dr. Hilgers realized that faith and reason would guide him in his research and as a practicing obstetrician and gynecologist.

During his 42 years of research, Dr. Hilgers has field tested the challenges and principles of *Humanae Vitae* and found they are legitimate, true, and work “for all people of good will.” The teachings of the Catholic Church have guided the development of CrMS and **NaProTECHNOLOGY**. Consequently, Dr. Hilgers and all physicians who embrace **NaProTECHNOLOGY** now have the tools needed to practice pro-life medicine consistent with their faith. We are not training NFP-only doctors; rather we are training physicians who have the opportunity to offer **NaProTECHNOLOGY**, which gives physicians the opportunity to practice diagnostic and healing medicine for women as a legitimate alternative to Artificial Reproductive Technology (“ART”).



Developers of the CrMS Ann Prebil, CFCE; Sue Hilgers, CFCE; Dr. Thomas W. Hilgers, MD, CFCE; and K. Diane Daly, CFCE.

¹“To Men of Science: We wish now to express our encouragement to men of science who ‘can considerably advance the welfare of marriage and the family, along with peace of conscience, if by pooling their efforts, they labor to explain more thoroughly the various conditions favoring a proper regulation of births.’ It is particularly desirable, that, according to the wish already expressed by Pope Pius XII, medical science succeed in providing a sufficiently secure basis for a regulation of birth, founded on the observance of natural rhythms. In this way, scientists and especially Catholic scientists, will clearly demonstrate in actual fact, that, as the Church teaches, ‘a true contradiction cannot exist between the divine laws pertaining to the transmission of life and those pertaining to the fostering of authentic conjugal love.’”

— Saint Paul VI (*Humanae Vitae*, Issued July 25, 1968)

D. CREIGHTON MODEL *FertilityCare* System (CrMS)

The CrMS provides comprehensive, professional services through individualized follow-up, standardized teaching tools, and ongoing research. It is the only education program in this field that meets the education demands of a newly emerging allied health profession and provides a case management approach to teaching.

CrMS is not:

- just a natural family planning method or natural method of contraception;
- just for married couples;
- difficult to learn or expensive to use; and
- complicated.

CrMS is:

- the first standardized system of the menstrual and fertility cycle biomarkers which strongly links and networks the ability to achieve or avoid pregnancy successfully with the ability of the woman to monitor and maintain her gynecologic and reproductive health;
- based on 42 years of research by Dr. Thomas Hilgers and his team,
- versatile and effective at any stage of a woman's reproductive life;
- the foundation of **NaProTECHNOLOGY**; and
- an international language of women's menstrual and fertility cycles and reproductive and gynecologic health maintenance.

E. NaProTECHNOLOGY

NaProTECHNOLOGY is natural procreative technology that utilizes the CrMS charting as a tool to diagnose and treat women's reproductive disorders. This new women's health science addresses every reproductive and gynecological medical issue. It provides genuine hope, help, and healing for women, is a legitimate and effective approach to women's health care, and is a true alternative to ART.

NaProTECHNOLOGY is not:

- a medical technology that destroys, manipulates or disrespects a woman's fertility;
- a medical technology that goes against the teachings of the Catholic Church;
- a quick fix or band aid approach; and
- to be combined with artificial approaches.

NaProTECHNOLOGY is:

- the first to network family planning with reproductive and gynecologic health monitoring and maintenance;
- able to evaluate and diagnose the underlying problems;
- morally acceptable to people of all faiths, maintaining the integrity of the human person, dignity of women, and integrity of marriage;
- a technology that provides real solutions to real problems such as infertility, PMS, ovarian cysts, repetitive miscarriage, postpartum depression, hormonal abnormalities, chronic discharges, and other health problems; and
- pro-life medicine, which respects women, couples, and unborn children.

F. THE DOUBLE HELIX

The Double Helix refers to the relationship between CrMS and **NaProTECHNOLOGY**. **NaProTECHNOLOGY** was developed as a result of the research that had been done on the CrMS. Because CrMS is the foundation and source of **NaProTECHNOLOGY**, **NaProTECHNOLOGY** cannot be practiced without the CrMS.

CREIGHTON
MODEL
FERTILITY
CARE
CENTERS
INTERNATIONAL

II. JOIN A PROFESSION TO ESTABLISH PRO-LIFE WOMEN'S REPRODUCTIVE HEALTH CARE BASED ON PRO-LIFE VALUES

"To Doctors and Medical Personnel: We hold those physicians and medical personnel in the highest esteem who, in the exercise of their profession, value above every human interest the superior demands of their Christian vocation. Let them persevere, therefore, in promoting on every occasion the discovery of solutions inspired by faith and right reason, let them strive to arouse this conviction and this respect in their associates. Let them also consider as their proper professional duty the task of acquiring all the knowledge needed in this delicate sector, so as to be able to give to those married persons who consult them wise counsel and healthy direction, such as they have a right to expect."

— Saint Paul VI (*Humanae Vitae*, Issued July 25, 1968)

An infrastructure for this new profession is established and operational. Upon satisfactory completion of the Education program, the graduate seeking to operate in the United States becomes part of this new profession through the The American Academy of **FertilityCare** Professionals (AAFCP) and **FertilityCare** Centers of America (FCCA). For graduates seeking to operate internationally, the graduate becomes part of this new profession through the The American Academy of **FertilityCare** Professionals (AAFCP) and **FertilityCare** Centers International (FCCI). The AAFCP maintains the quality of the teaching standards through certification and the educational standards through accreditation. FCCA and FCCI unite and promote all **FertilityCare** professionals. Dr. Hilgers has stated that through this professional infrastructure, we are called to a higher calling by providing professional fertility regulation, and reproductive and gynecological guidance and medical services.

A. **FertilityCare** PRACTITIONER

The **CREIGHTON MODEL FertilityCare** Practitioners Education Program's primary objective for you the applicant is to teach within the moral context of respect for human life. The CrMS is the foundation for the new women's health science of **NaProTECHNOLOGY**. The course objective includes the standardized protocols necessary for appropriate Practitioner referrals to a Medical Consultant and the role of the Practitioner with the referral process.

B. MEDICAL CONSULTANT

The objective of the Medical Consultant Program is to provide instruction to you the applicant how to:

- think differently about diagnosis and treatment with the focus on healing patients with a consistent respect for life;
- understand that **NaProTECHNOLOGY** cannot be mixed with artificial approaches; and
- commit to learning the science of **NaProTECHNOLOGY**, following protocols, and working cooperatively with the certified Practitioners in order to provide the highest quality medical care.

III. CREIGHTON MODEL **FertilityCare** System (CrMS) PROGRAMS

"Extra-ordinary experience! This was an outstanding experience of total immersion!" — Comment from Participant

This is the 39th consecutive year in which **CREIGHTON MODEL** Education Programs have been offered. All graduates of **CREIGHTON MODEL** Education Programs must be affiliated with **FertilityCare** Centers of America or **FertilityCare** Centers International in order to obtain **CREIGHTON MODEL FertilityCare System** client teaching materials. These two organizations are designed to unite **CREIGHTON MODEL FertilityCare** Centers nationally and internationally.

A. **FertilityCare** PRACTITIONER PROGRAM

The **FertilityCare** Practitioner Program is a 13-month program for training CrMS teachers. The **FertilityCare** Practitioner Program provides education in both the basic as well as advanced aspects of the CrMS and consists of two education phases (Education Phase I (“EPI”) and Education Phase II (“EPII”)), and two supervised practicums (Supervised Practicum I (“SPI”) and Supervised Practicum II (“SPII”)). Only EPI and EPII are presented on location in Omaha, Nebraska. All other educational services are provided through an innovative system of long-distance supervision and on-site visitation.

1. EDUCATION PHASE I (EPI)

EPI is an eight-day total immersion course. At the conclusion of these eight days, participants should be able to demonstrate knowledge of the following curriculum content:

- History of Natural methods of Family Planning;
- Anatomy of the Male and Female Reproductive Systems;
- Statistical Parameters of the Menstrual Cycle;
- Ovulation and the Hormones of the Menstrual Cycle;
- The Mechanism of Anovulation;
- The Physiology of Menopause and Breastfeeding;
- Psychodynamics of Contraception, NFP, and Human Sexuality;
- The Physiology of the Cervix;
- Sperm Survival and Transport;
- Physical and Psychological Aspects of Induced Abortion;
- The Beginning of Human Life;
- Principles of Presenting the Introductory Session;
- Artificial Methods of Contraception;
- Critical Evaluation of the “Health Benefits” of Contraception;
- The Natural Family Planning Methods and their Comparative Evaluation;
- Use Effectiveness of Contraception, NFP, and the **CREIGHTON MODEL FertilityCare System**;
- Teaching Fertility Appreciation, Utilization of Good Judgment, Quality Control in the CrMS, and The Dynamic Interpersonal Educational Model;
- **CREIGHTON MODEL FertilityCare System**:
 - The Standardization of Teaching;
 - The Tools of Standardization;
 - Introduction to the CrMS Follow-up Form;
 - Definitions Used in the CrMS Follow-up Form;
 - Making Good Observations of the Biomarkers (Follow-up Form); and
 - The Picture Dictionary;
- **CREIGHTON MODEL FertilityCare System**: The Vaginal Discharge Recording System, The Teaching Schedule, and An Introduction to Problem Solving and Case Management;
- **CREIGHTON MODEL FertilityCare System**: Basic Charting and CrMS Instructions;
- *Humanae Vitae*: Exploring Its Landscape;
- **CREIGHTON MODEL FertilityCare System**: Basic Chart Reading, Correcting, and Special Instructions;
- Supervised Practicum I Responsibilities;
- **CREIGHTON MODEL FertilityCare System**: Basic Principles of Follow-up;
- The **CREIGHTON MODEL** Follow-up Form;
- The Organization and Flow of the First and Subsequent Follow-ups;
- Conducting an Introductory Session and Follow-up;
- Techniques of Follow-up;
- Introduction to **NaProTECHNOLOGY**: Basic Problem Solving;
- **CREIGHTON MODEL FertilityCare System**: Case Management Objectives and Unusual Descriptions Observed in Charting;
- Basic Issues and Decision Making;

- Introductory Session Teaching Lab;
- **NaProTECHNOLOGY**: Introduction to Pre-Peak Yellow Stamps, New Hope for Infertility, Introduction to the Investigation and Care of the Infertile Couple, and Visualization Techniques in Infertility; and
- Qualities of Being a Professional and Promotion of **FertilityCare**.

2. SUPERVISED PRACTICUM I (SPI)

The SPI is six months in duration and is to be completed at the student's home location. SPI involves a faculty-supervised structured experience that focuses on developing the following basic teaching skills:

- Presentation of the Introductory Session;
- How to conduct a Follow-up;
- The Techniques of Follow-up;
- Teaching Observations & Charting;
- Presentation of the Picture Dictionary;
- Evaluation of Case Report;
- Evaluation of Case Management;
- Use of Basic Organizational Tools; and
- Teaching Observations, Charting, and Instruction.

3. EDUCATION PHASE II (EPII)

EPII is a six-day total immersion course, consisting of lectures, clinical group discussion, and hands-on problem solving of the advanced aspects of teaching the CrMS. Participants should be able to demonstrate knowledge and ability of the following curriculum content:

- Introduction to Case Management;
- Presentation of Basic Cases;
- **NaProTECHNOLOGY**: The New Women's Health Science;
- SPII Responsibilities;
- *Dignitas Personae*: Companion Piece to *Humanae Vitae* and *Donum Vitae*;
- Comprehensive Case Review;
- Advanced Case Management I–The Role of the CrMS in Managing Infertility and other Reproductive Disorders;
- Advanced Case Management II–The Management of Unusual Bleeding with CrMS;
- Advanced Case Management III–Advanced Chart Reading, Identify the True Mucus Cycle, General Overview, Regular Cycles, Management of Continuous Mucus, Use of Yellow Stamps in CrMS: Breastfeeding, Long Cycles, Post-Peak/Peak-type mucus, Summary of Yellow Stamp Procedures;
- The Ethics of Infertility Treatment;
- Advanced Case Management IV–Introduction to Pregnancy Evaluation, The Pregnancy Evaluation Form, and Completing the Pregnancy Evaluation Form;
- Pregnancy Classification Work Session;
- American Academy of **FertilityCare** Professionals;
- Establishing a **FertilityCare** Center: **FertilityCare** Centers of America, **FertilityCare** Centers International;
- Protecting the Right of Informed Conscience in Reproductive Medicine;
- Managing the Human Resources of a **CREIGHTON MODEL FertilityCare** Program;
- Practical Psychology for Practitioners;
- Advanced Case Management V–Advanced Issues in CrMS: Basic Ethical Principles and **CREIGHTON MODEL** Educational Principles for Working with Advanced Issues;
- CrMS Charting Patterns in Unusual Situations;
- Additional Applications of Essential Sameness;
- Presentation of Advanced Cases;
- **NaProTECHNOLOGY**: Unleashing the Power in a Woman's Cycle

- Saint Paul VI Institute Services: Patient Care;
- Advanced Organizational Aspects of CrMS; and
- Applying **NaProTECHNOLOGY** in a **CREIGHTON MODEL** Practice.

4. SUPERVISED PRACTICUM II (SPII)

SPii is seven months in duration and is a supervised clinical experience at the student's home location. The clinical aspects of this supervised practicum are devoted to learning advanced teaching skills in:

- Advanced Chart Reading and Correcting;
- Advanced Case Management;
- Case Management Evaluation;
- Conducting Pregnancy Evaluations;
- Writing Goals and Objectives;
- Writing Job Descriptions; and
- Completing Assignments on Advanced Case Management.



In addition, SPii includes an **On-Site Visit** by a member of the **CREIGHTON MODEL** faculty and/or an Educator/Supervisor Intern. At the On-Site Visit, the following will be reviewed:

- Introductory Session;
- Follow-up;
- Tour of Facilities; and
- Comprehensive Case Review.

B. **FertilityCare** INSTRUCTOR PROGRAM

This is a seven-month program, open to persons with less than two years of post high school education. It is designed to provide only basic education in the CrMS. These teachers may teach only under the supervision of a **FertilityCare** Practitioner. The training program includes EPI and SPI as described previously under the Practitioner program description. Only those curriculum items that are previously outlined for EPI and SPI make up the Instructor Program. There is no EPII or On-Site Visit.

C. **FertilityCare** EDUCATOR PROGRAM

This 13-month program is the most advanced allied health program available in **FertilityCare**. It is available only to **FertilityCare** Practitioners with at least one year of teaching experience and who are certified as Practitioners (or in the process of being certified) by the American Academy of **FertilityCare** Professionals (AAFCP). The individual must have a Bachelor's Degree or be a Registered Nurse. The focus of this program develop and implement a **CREIGHTON MODEL** Education Program that meets the standards of the AAFCP; or to serve as faculty on an established education program. This program has two education phases, two supervised practicums and an On-Site Visit. Contact the Saint Paul VI Institute Allied Health Education Department for more details on the curriculum content of this program.

* Application to the program does not ensure acceptance. Because class is limited, applicants are accepted on the basis of qualifications and geographical need. If you have submitted an application, it is under consideration.

D. CRMS MEDICAL CONSULTANT PROGRAM

The Medical Consultant Program is a six-month program with two education phases, EPI and EPII, and one supervised practicum, SPI, designed to assist physicians to incorporate into their medical practices the newly emerging science of **NaProTECHNOLOGY**. It also assists the physician to establish a cooperative agreement with a **FertilityCare** Center in order for the **FertilityCare** Center

to feature **NaProTECHNOLOGY**. In addition, a Medical Consultant can also work in a supportive and administrative role with a **FertilityCare** Education Program.

Physicians enrolled in the Medical Consultant Program should understand that the medical applications they will learn are related specifically to the CrMS. Therefore, they should either plan to have a **FertilityCare** Practitioner available in their area or establish a professional relationship with an approved **FertilityCare** Center. It is possible for a physician to enroll in a combined Medical Consultant/Practitioner Program; however, this course is demanding, and one must have sufficient time to complete it.

E. NURSE PRACTITIONER, PHYSICIAN ASSISTANT, NURSE MIDWIFE, AND PHARMACIST PROGRAMS

CrMS programs are also offered to Nurse Practitioners, Physician Assistants, Nurse Midwives, and Pharmacists. For these programs, see applicant eligibility below. These certificate programs include a combination of the CrMS Instructor and Medical Consultant Programs. EPI dates for the Double Program student are Feb. 9–16, 2019. EPII dates for the Double Program student are Aug. 26–31, 2019. Both certificates — Medical Consultant and Practitioner — will be presented upon satisfactory completion of the Practitioner Program and all Medical Consultant assignments and examinations.

A **FertilityCare** Practitioner who is a Nurse Practitioner, Physician Assistant, Nurse Midwife or Pharmacist may return to EPII and complete the Medical Consultant portion of the program.

IV. ELIGIBILITY

A. APPLICANT ELIGIBILITY

The Saint Paul VI Institute Allied Health Education Department welcomes applications from individuals or couples with strong motivation and commitment to the very highest quality **FertilityCare** services.

PRACTITIONERS:

1. Registered nurse with current license.
2. Allied health professional with a BA or BS degree in:
 - a. Health or basic sciences;
 - b. Behavioral sciences;
 - c. Social sciences;
 - d. Education; or
 - e. Other non-health fields are individually recognized.
3. Associate degree/diploma such as:
 - a. Licensed Practical Nurse;
 - b. Human Services Practitioner; or
 - c. The equivalent of two years of college study.

MEDICAL CONSULTANTS:

1. Physician with current license.
2. Nurse Practitioner, Physician Assistant, or Nurse Midwife with current license and able to legally prescribe medications and order tests (with or without proctoring) in the state of their practice.
3. Pharmacist with current license.

Further eligibility criteria requires that applicants do not prescribe or refer for contraceptives, do not perform or refer for sterilization or abortion, do not perform or refer for any of the artificial technologies, practice (use) natural family planning or, if single and celibate, monitor their natural fertility and be a philosophical acceptor of natural family planning. This program recognizes that human sexuality is a function of the whole person and not just a function of its parts. It further recognizes the scriptural notation that we are “created in the image and likeness of God” and that such a philosophical principle ultimately

dictates the approach to the human person that will come under the care of a **FertilityCare** professional.

B. AUDITORS

The course is available for individuals who do not meet the applicant eligibility requirements but wish to audit the program. A physician, physician assistant, or nurse practitioner may audit for CME credit; a nurse may audit for CEU credit. CME and CEU credit requires satisfactory completion of examinations offered during the Education Phases.

C. INTERNATIONAL STUDENTS

When applying for the Saint Paul VI Institute's education programs, **all applicants understand that the course instruction, teaching materials, and examinations will be available only in English.** Applicants are also expected to have communication technology (fax, phone, e-mail, timely mail service) to complete course requirements.

V. CONTINUING EDUCATION CREDITS FOR DOCTORS, NURSES, PHYSICIAN ASSISTANTS, AND NURSE PRACTITIONERS

A. EDUCATION PHASE I (OMAHA ONLY) — OCTOBER 12–19, 2020

American Congress of Obstetricians and Gynecologists (ACOG)

The American Congress of Obstetricians and Gynecologists has assigned 60 cognate credits to this program.

Category 1

Creighton University Health Sciences Continuing Education designates this live activity for a maximum of 61.5 *AMA PRA Category 1 Credit(s)*[™]. Physicians should claim only the credit commensurate with the extent of their participation in this activity.

AAPA accepts AMA category 1 credit for the PRA from organizations accredited by ACCME.

AAFP

Application for CME credit has been filed with the American Academy of Family Physicians. **Determination of credit is pending.**

Nurses CE

Creighton University Health Sciences Continuing Education designates this activity for 61.5 contact hours for nurses. Nurses should claim only credit commensurate with the extent of their participation in this activity.

Nurses licensed in Iowa and California: This activity was planned and developed in accordance with the continuing education standards of the American Nurses Credentialing Center (ANCC). The Iowa Board of Nursing and the California Board of Nursing will honor ANCC continuing education credits for face-to-face programs held outside Iowa and California, or for ANCC-approved online recorded courses taken in a self-study format.

Pharmacy

The *Creighton Model FertilityCare Allied Health Education Program-Phase I* is provided by Creighton University Health Sciences Continuing Education (HSCE). HSCE is accredited by the Accreditation Council for Pharmacy Education (ACPE) as a provider of continuing pharmacy education. This activity is assigned Universal Activity (UAN) # 0839-9999-14-070-L04-P and is accredited for 61.5 hours for attendance of all CE sessions November 8–15, 2014. The *Creighton Model FertilityCare Allied Health Education Program-Phase I* is a knowledge-based CE activity.

Accreditation Statement:

This activity has been planned and implemented by Creighton University Health Sciences Continuing Education and Saint Paul VI Institute for the advancement of patient care. Creighton

University Health Sciences Continuing Education is accredited by the American Nurses Credentialing Center (ANCC), the Accreditation Council for Pharmacy Education (ACPE), and the Accreditation Council for Continuing Medical Education (ACCME) to provide continuing education for the healthcare team.

B. EDUCATION PHASE II (OMAHA ONLY) — MARCH 28–APRIL 4, 2020

American Congress of Obstetricians and Gynecologists (ACOG)

The American Congress of Obstetricians and Gynecologists has assigned 69 cognate credits to this program.

Category 1

Creighton University Health Sciences Continuing Education designates this live activity for a maximum of 69.5 *AMA PRA Category 1 Credit(s)*[™]. Physicians should claim only the credit commensurate with the extent of their participation in this activity.

AAPA accepts AMA category 1 credit for the PRA from organizations accredited by ACCME.

AAFP

Application for CME credit has been filed with the American Academy of Family Physicians. **Determination of credit is pending.**

Nurses CE

Creighton University Health Sciences Continuing Education designates this activity for 69.5 contact hours for nurses. Nurses should claim only credit commensurate with the extent of their participation in this activity.

Nurses licensed in Iowa and California: This activity was planned and developed in accordance with the continuing education standards of the American Nurses Credentialing Center (ANCC). The Iowa Board of Nursing and the California Board of Nursing will honor ANCC continuing education credits for face-to-face programs held outside Iowa and California, or for ANCC-approved online recorded courses taken in a self-study format.

Pharmacy

The *Creighton Model FertilityCare Allied Health Education Program-Phase II* is provided by Creighton University Health Sciences Continuing Education (HSCE). HSCE is accredited by the Accreditation Council for Pharmacy Education (ACPE) as a provider of continuing pharmacy education. This activity is assigned Universal Activity (UAN) # 0839-9999-14-071-L04-P and is accredited for 69.5 hours for attendance of all CE sessions April 14–21, 2019. The *Creighton Model FertilityCare Allied Health Education Program-Phase II* is a knowledge-based CE activity.

Accreditation Statement:

This activity has been planned and implemented by Creighton University Health Sciences Continuing Education and Saint Paul VI Institute for the advancement of patient care. Creighton University Health Sciences Continuing Education is accredited by the American Nurses Credentialing Center (ANCC), the Accreditation Council for Pharmacy Education (ACPE), and the Accreditation Council for Continuing Medical Education (ACCME) to provide continuing education for the healthcare team.

FINAL CERTIFICATE EXAMINATION

All students enrolled in the Practitioner, Instructor, and Medical Consultant Programs are required to take a criterion-referenced, professionally administered final certificate examination. The Practitioner certificate examination is given in November, the Instructor exam is given in May, and the Medical Consultant examination is given on the last day of EPII in April.

JOINT SPONSORSHIP AND CERTIFICATES

Saint Paul VI Institute **FertilityCare** System Allied Health Education Programs are jointly provided by the Saint Paul VI Institute for the Study of Human Reproduction and Creighton University Health

Sciences Continuing Education and School of Medicine. Upon satisfactory completion of course requirements, a certificate will be issued and signed by the Dean of the School of Medicine and the Director of the Saint Paul VI Institute.

AMERICAN ACADEMY OF **FertilityCare** PROFESSIONALS ACCREDITATION

Saint Paul VI Institute **FertilityCare** Allied Health Education Programs are accredited by the American Academy of **FertilityCare** Professionals (AAFCP). The educational programs provide students the appropriate education background to become eligible for the certification procedures of the AAFCP.

VI. FEES

TUITION

All tuition costs must be paid upon entry into the program or according to the tuition payment schedule provided by the program. The following tuition has been established for each program:

- **FertilityCare** Practitioner \$3,100
- **FertilityCare** Instructor \$2,250
- CrMS Medical Consultant \$3,100
- CrMS Medical Consultant/
 - **FertilityCare** Practitioner Combined Course \$5,950
- **FertilityCare** Educator \$3,250
- Medical Consultant Auditor \$2,700

TEXTBOOK FEES

Required textbooks and client teaching supplies are purchased from Saint Paul VI Institute Publications Department and are subject to shipping charges and/or Nebraska sales tax. Fees for required textbooks vary depending upon the education program. Required EPI and EPII class materials will be billed by the Saint Paul VI Institute Publications Department. A total of those fees for each program are listed below.

Since there are a few of our textbooks available to the public, a textbook verification will be done with each student, and a reduction in textbook fees may be considered.

- **FertilityCare** Practitioner \$368.83*
- **FertilityCare** Instructor \$263.88*
- CrMS Medical Consultant \$728.78
- CrMS Medical Consultant/
 - **FertilityCare** Practitioner Combined Course \$803.78*
- **FertilityCare** Educator \$1,099.73
- Medical Consultant Auditor \$503.78

* These programs require the purchase of client teaching materials. Cost of client teaching materials varies depending upon whether or not the student is providing **CREIGHTON MODEL FertilityCare** Services within the confines of an existing center that is affiliated with **FertilityCare** Centers of America. If beginning an independent center, the approximate cost of client materials, in order to meet the requirements necessary for program completion, is \$450.50. It should be noted that initial outlay of expenses for these supplies may be reimbursable from client fees.

Current materials distribution procedures take into account the need to provide the most cost-effective means possible to minimize the additional costs of shipping and/or sales tax for students. International students should expect to pay higher shipping costs.

PRACTITIONER PROGRAM ON-SITE VISIT FEES

The room, board, and round-trip transportation for the Practitioner On-Site Visit will be the responsibility of the student.

ROOM & BOARD FEES

The course is held at the Cardinal Carlo Maria Martini, SJ Retreat House, Calle Mariles No. 100, Fracc. Haras La Joya, Col. Flor Del Basque, Amozoc, Puebla, Mexico. Accommodations are arranged through the Saint Paul VI Institute Education Department, but travel arrangements are the responsibility of the participating students.

FINANCIAL AID

The Saint Paul VI Institute has limited ability to provide financial assistance. A resource guide for funding suggestions has been developed for students. Medical Military applicants might qualify for funding through the Military. Contact your Military's Education Service Office.

ARCHBISHOP DANIEL E. SHEEHAN SCHOLARSHIP FUND (OMAHA)

Named for the late archbishop of Omaha, these are tuition scholarships only and do not apply to the materials fee, room and board, or On-Site Visit expenses. This scholarship fund can assist some students with up to 50% tuition reduction. For the most part, these scholarship funds are restricted to the State of Nebraska.

SAINT PAUL VI INSTITUTE SCHOLARSHIP FUND (OMAHA)

These are tuition scholarships only and do not apply to the materials fee, room and board expenses or On-Site Visit expenses. These can assist students with tuition reduction in variable amounts and are not restricted by geography.

THE NANCY BOTKIN AND ANN PREBIL MEMORIAL SCHOLARSHIPS (OMAHA)

These are tuition scholarships only and are restricted to students in the **FertilityCare** Educator program.

APPLICATION, DEPOSIT, AND DEADLINES

If interested in one of the programs, request an application from the Saint Paul VI Institute **FertilityCare System** Allied Health Education Office.

Class size is limited. Early submission of an application is strongly recommended. Timely acceptance into the program will allow adequate study time of the books and materials. Applications received after Jan. 1, 2020 are not guaranteed a seat in the current class. Upon acceptance into the program and prior to Jan. 1, 2020, a \$250 tuition deposit is required to secure enrollment in the class.



WRITE, CALL, FAX, OR EMAIL FOR COURSE APPLICATION

Saint Paul VI Institute
FertilityCare Allied Health Education Dept.
6901 Mercy Rd., Omaha, NE 68106
(402) 390-9168 | Fax: (402) 390-9851
www.popepaulvi.com | education@popepaulvi.com

VII. FACULTY

*"The dedication and approachability of the faculty members was inspiring and it was great to hear the personal stories behind their life's work with **CREIGHTON MODEL**. The fact that they have all dedicated such large portions of their lives to this added enormous weight to each presentation, as it was clear that therein lay a true belief of heart and soul." — Comment from Participant*



Left to right: Claudia Leon, Christy Shoen, Alia Keys, K. Diane Daly, Dr. Thomas W. Hilgers, and Elizabeth Martinez.

Thomas W. Hilgers, MD, CFCE, CFCMC: Director, Certificate Programs for **CREIGHTON MODEL FertilityCare System** Allied Health Education Programs; Director, Saint Paul VI Institute for the Study of Human Reproduction; Clinical Professor, Department of Obstetrics and Gynecology, Creighton University School of Medicine, Omaha, Nebraska; Co-developer of the CrMS and developer of **NaProTECHNOLOGY**.

K. Diane Daly, RN, CFCE: Supervisor, Mercy Hospital Department of **FertilityCare** Services; Director, Office of NFP, Archdiocese of St. Louis, St. Louis, Missouri; Co-developer of the CrMS.

Stephen Hilgers, MD, JD, CFCMC.

Susan K. Hilgers, BA, CFCE: Vice-President for Institute Advancement, Saint Paul VI Institute for the Study of Human Reproduction, Omaha, Nebraska; Co-developer of the CrMS.

Claudia Margarita León, MCF, CFCP, CFCE. Director of San José **FertilityCare** Center in León, Mexico.

Alia Keys, BA, CFCE: Director, Mercy **FertilityCare** Practitioner Education Program, St. Louis, Missouri.

Elizabeth Martinez, CFCE.

The Rev. Edward J. Richárd, D ThM, JD: Pastor at Our Lady of Prompt Succor Catholic Church, Sulphur, Louisiana.

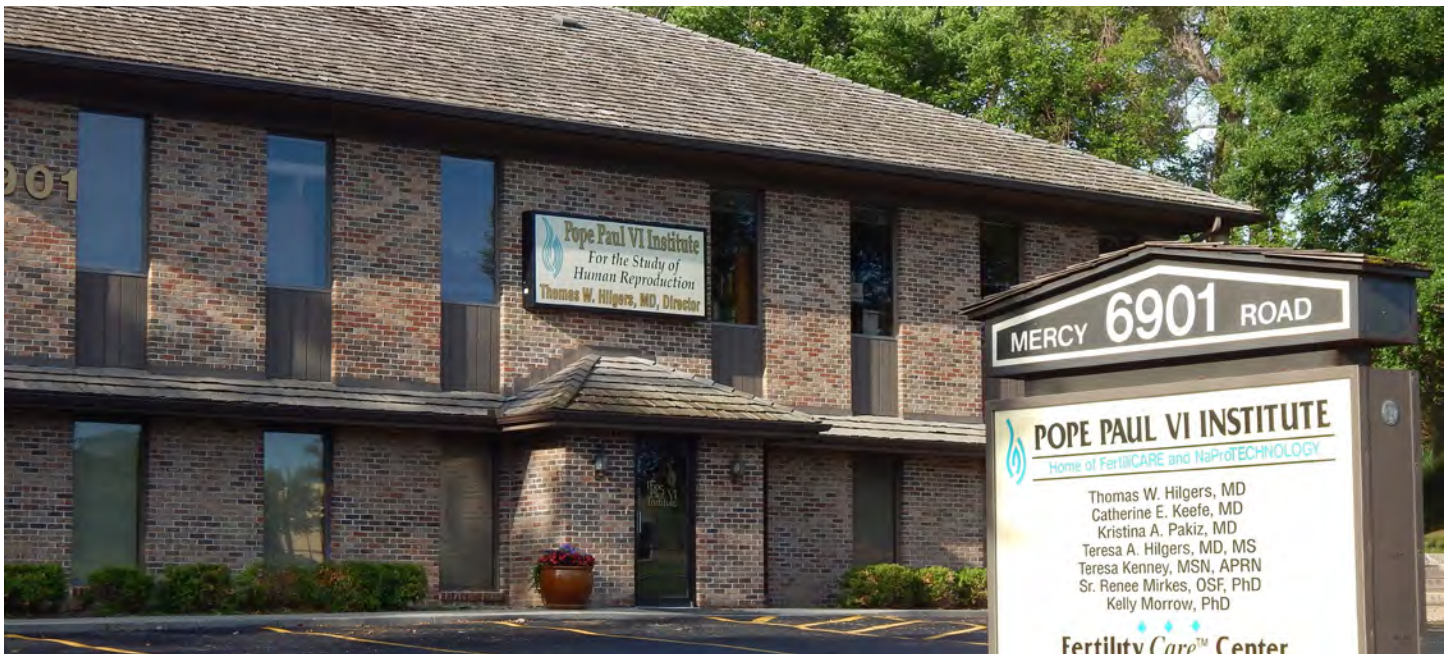
Christy Shoen, BS, CFCE: Director, Family **FertilityCare** Center, Chagrin Falls, Ohio.

Victor Topete, MD, CFCMS.

Jeanice Vinduska, BS, CFCE: Co-Director, Saint Paul VI Institute **FertilityCare** Center of Omaha, Omaha, Nebraska and Mexico Coordinator, Saint Paul VI Allied Health Education Program, Omaha, Nebraska.

Faculty realizes no financial gain from their involvement in the education programs.





At a Glance...Saint Paul VI INSTITUTE

Students attending education phases in Omaha, Nebraska will tour the **Saint Paul VI Institute for the Study of Human Reproduction** facility. The Institute is a 17,000-square-foot international research, education, medical, and service center with a staff of 24 full- and 36 part-time professionals. The Institute's developments are the **CREIGHTON MODEL FertilityCare System** (CrMS) and **NaProTECHNOLOGY**. These provide healthy, moral solutions to issues in women's health care impacting the lives of thousands of women, couples, doctors, medical students, nurses, priests and babies every year on national and international levels. It is dedicated to continuing its founding mission of building a Culture of Life in women's health care through its current programs and services, which include:

- **National Center for Women's Health:**
Features patient care services, a state-of-the-art ultrasound center, and national hormone laboratory
- **Allied Health Education Program:**
Educates medical professionals and practitioners in the CrMS and **NaProTECHNOLOGY**
- **St. John Paul II Fellowship Program:**
Trains OB/GYNs in the medical and surgical applications of **NaProTECHNOLOGY** in affiliation with Creighton University School of Medicine
- **Research Division:**
Develops cutting-edge approaches to reproductive health issues and investigates cures for infertility
- **Center for NaProEthics:**
Articulates the unity between faith, reason, and true science
- **FertilityCare Center of Omaha:**
Practitioners teach women and couples the CrMS at the Center
- **Seminary Course:**
Co-sponsors a course in marriage, the family, and human sexuality at three American seminaries—Kenrick-Glennon, Pontifical College Josephinum, and St. Charles Borromeo
- **Summer Pre-medical Internship:**
Immerses pre-medical students in the Institute's cutting-edge research



6901 Mercy Rd., Omaha, NE 68154